



WHAT'S DIFFERENT?

Can you find 10 differences between these pictures?

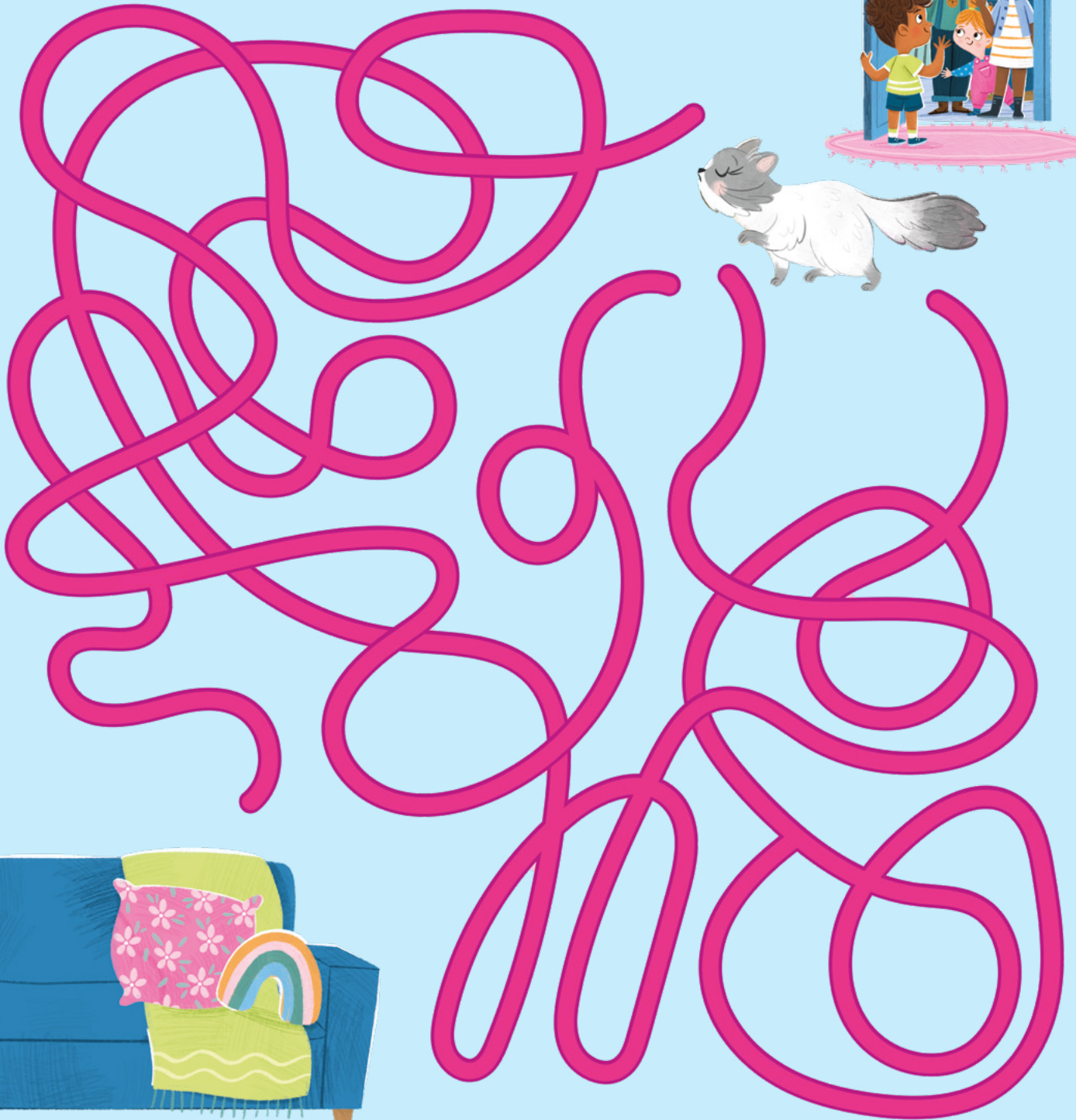


Answer Key (from left to right): 1. The potted plant is missing; 2. Addie is wearing a hat; 3. A picture frame hangs on the back wall; 4. Mom's headband is pink; 5. The pink dish towel is missing from the cabinet; 6. A teddy bear is in the water bucket; 7. Dad's apron is purple; 8. The framed watermelon picture is changed to an apple; 9. The green bottle is missing; 10. Cleo's food bowl is blue.



MAZE

Uh-oh, company's here!
Help Cleo escape to her favorite spot under the couch.





WHICH COMES FIRST?

These pictures are all mixed up! Number them from 1 to 4 in the correct order that they happened in the story.





FACES AND FEELINGS

You can tell how Cleo is feeling by looking at her face. Can you make these faces to show how you're feeling, too?



HAPPY



SLEEPY



BORED



SNEAKY



SCARED



SURPRISED



CAT-TASTIC COLORING

Use your crayons or colored pencils to color in this picture of Cleo relaxing in the backyard.

